

**LEGEND**

	< 8		< 8 ft		Green Passing		Green		Green CAN
	8 - 9		8 - 9 ft		Red Passing		Red		Red NUN
	9 - 9.5		9 - 10 ft		Green Crossing		Junction		
	9.5 - 10		10 - 12 ft		Red Crossing				
	10 - 12		River Mile						
	12 - 14		Sailing Line						
	14 - 16		BSNP Structure						
	> 16		Levee						

**NOTES:**  
 Horizontal Coordinate System: World Geodetic System of 1984 (WGS84), projected to the Universal Transverse Mercator (UTM) Zone 15 North. Distance units in U.S. Survey Feet.  
 Vertical Datum: Soundings are shown in feet and indicated depths are referenced to water surface at time of collection.  
 The information depicted on this map represents the results of a survey conducted on the date indicated and can only be considered to represent the general condition existing at that time.  
 The location of navigation aids are based on and provided by the U.S. Coast Guard.



**DISCLAIMER:** The United States Government furnishes this information for a specific purpose and does not warrant its accuracy or completeness. It is provided as is, with all faults. The user of the information and the user's organization are responsible for the use of the information and for the results of any actions taken thereon. The user of the information and the user's organization are responsible for the use of the information and for the results of any actions taken thereon. The user of the information and the user's organization are responsible for the use of the information and for the results of any actions taken thereon.

KANSAS CITY DISTRICT MISSOURI RIVER AREA OFFICE	
Submitted By:	MIRA/O
Reviewed By:	MIRA/O
Checked By:	MIRA/O
Approved:	

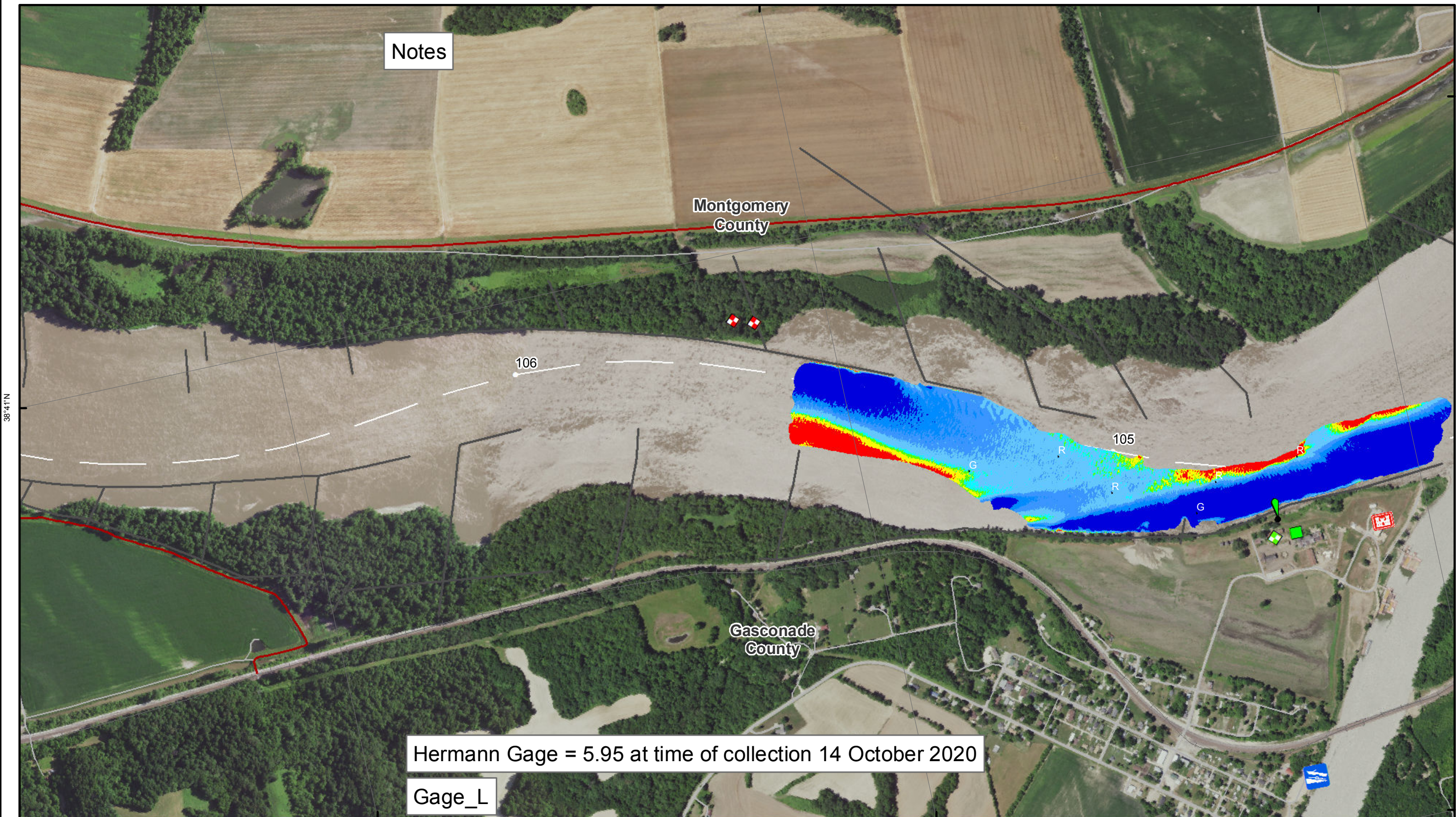
**Survey Information**  
 MO\_02\_LMR  
 MO\_02\_LMRX\_20201014\_CS\_105\_5\_104\_5\_SORT  
 14 October 2020

**Sheet Number**  
 2 of 46

91°35'W

91°34'W

91°33'W



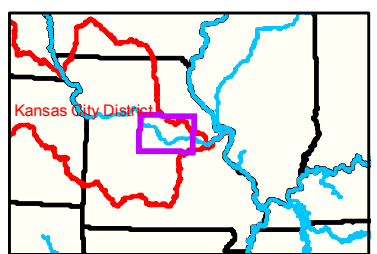
Notes

Montgomery County

Gasconade County

Hermann Gage = 5.95 at time of collection 14 October 2020

Gage\_L



91°35'W

91°34'W

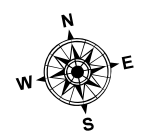
**LEGEND**

	< 8		< 8 ft		Green Passing		Green		Green CAN
	8 - 9		8 - 9 ft		Red Passing		Red		Red NUN
	9 - 9.5		9 - 10 ft		Green Crossing		Red		Junction
	9.5 - 10		10 - 12 ft		Red Crossing				
	10 - 12		River Mile						
	12 - 14		Sailing Line						
	14 - 16		BSNP Structure						
	> 16		Levee						

**Buoy**

Green CAN  
 Red NUN

Scale: 0 312.5 625 937.5 1250 2500 Feet



**NOTES:**  
 Horizontal Coordinate System:  
 World Geodetic System of 1984 (WGS84), projected to the  
 Universal Transverse Mercator (UTM) Zone 15 North.  
 Distances in U.S. Survey Feet

Vertical Datum:  
 Soundings are shown in feet and indicated depths  
 are referenced to water surface at time of collection.

The information depicted on this map represents the results of a survey  
 conducted on the date indicated and can only be considered  
 to represent the general condition existing at that time.

The location of navigation aids are based on and provided by  
 the U.S. Coast Guard.



**DISCLAIMER:** The United States Government furnishes this information for a specific purpose and does not warrant its accuracy or completeness. It is provided as is, with all faults, and the user assumes all liability for its use. The United States Government makes no warranty, express or implied, in this information and shall not be held liable for any damages or losses, including consequential, arising from the use of this information. The user shall indemnify and hold the United States Government harmless from any and all claims, damages, and expenses, including reasonable attorneys' fees, that may be asserted against or incurred by the United States Government or its employees, agents, or contractors, in connection with or arising from the use of this information.

KANSAS CITY DISTRICT MISSOURI RIVER AREA OFFICE	
Surveyed By:	MIRAO
Checked By:	MIRAO
Approved By:	MIRAO

**Survey Information**  
 MO\_02\_LMR  
 MO\_02\_LMRX\_20201014\_CS\_105\_5\_104\_5\_SORT  
 14 October 2020

**Sheet Number 3 of 46**

38°47'N

38°41'N

38°40'N